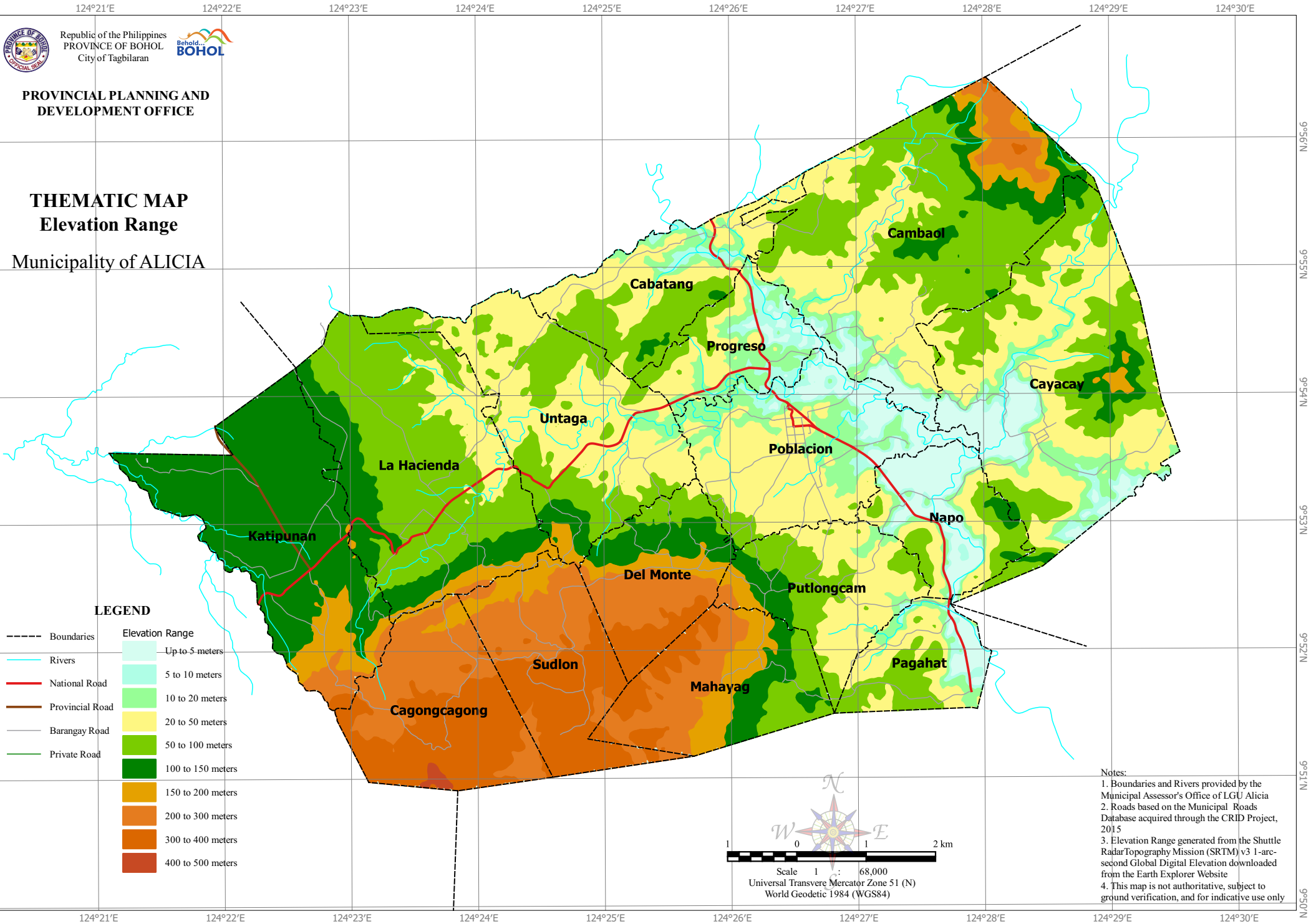




PROVINCIAL PLANNING AND  
DEVELOPMENT OFFICE

**THEMATIC MAP**  
**Elevation Range**  
Municipality of ALICIA



**LEGEND**

- |                   |                        |
|-------------------|------------------------|
| --- Boundaries    | <b>Elevation Range</b> |
| — Rivers          | Up to 5 meters         |
| — National Road   | 5 to 10 meters         |
| — Provincial Road | 10 to 20 meters        |
| — Barangay Road   | 20 to 50 meters        |
| — Private Road    | 50 to 100 meters       |
|                   | 100 to 150 meters      |
|                   | 150 to 200 meters      |
|                   | 200 to 300 meters      |
|                   | 300 to 400 meters      |
|                   | 400 to 500 meters      |

Scale 1 : 68,000  
Universal Transverse Mercator Zone 51 (N)  
World Geodetic 1984 (WGS84)

Notes:  
1. Boundaries and Rivers provided by the Municipal Assessor's Office of LGU Alicia  
2. Roads based on the Municipal Roads Database acquired through the CRID Project, 2015  
3. Elevation Range generated from the Shuttle Radar Topography Mission (SRTM) v3 1-arc-second Global Digital Elevation downloaded from the Earth Explorer Website  
4. This map is not authoritative, subject to ground verification, and for indicative use only